

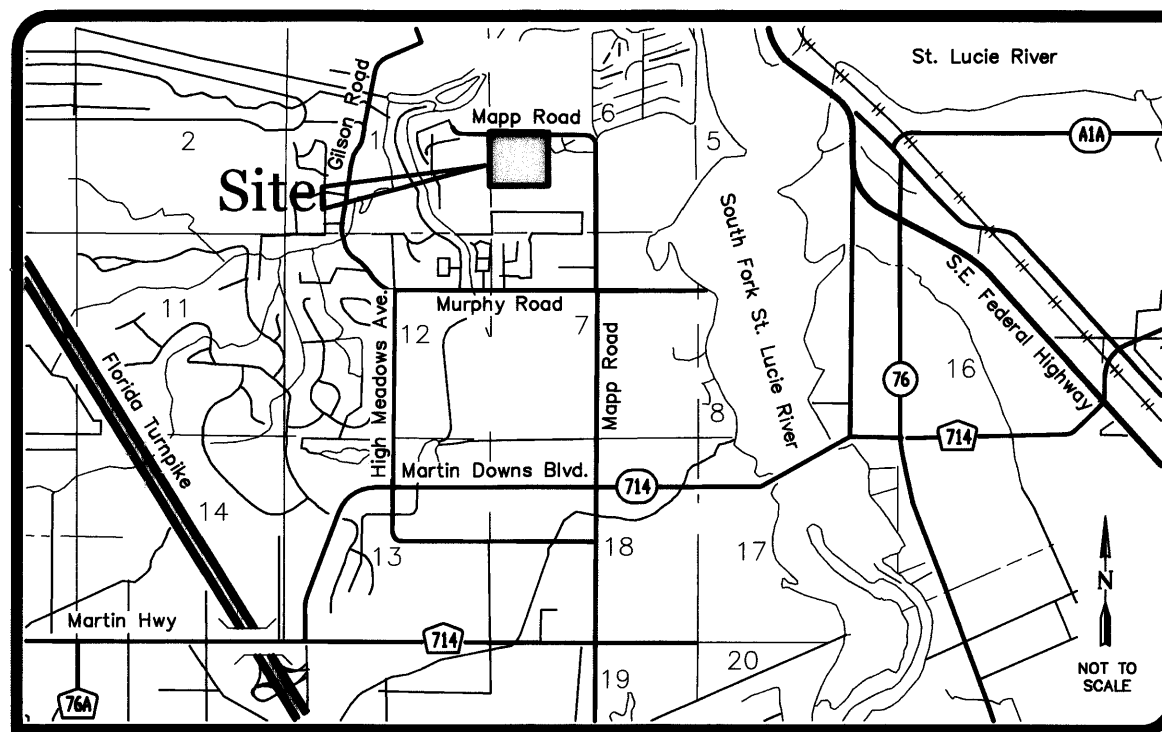
# Palm Cove Golf & Yacht Club Phases 21 & 22, A P.U.D.(r)

Plat Book 15

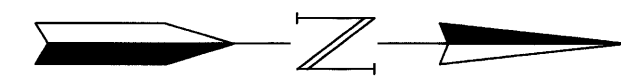
Page 42

Being a parcel of land lying in the Northwest 1/4 of the Southwest 1/4 of Section 6, Township 38 South, Range 41 East, Martin County, Florida

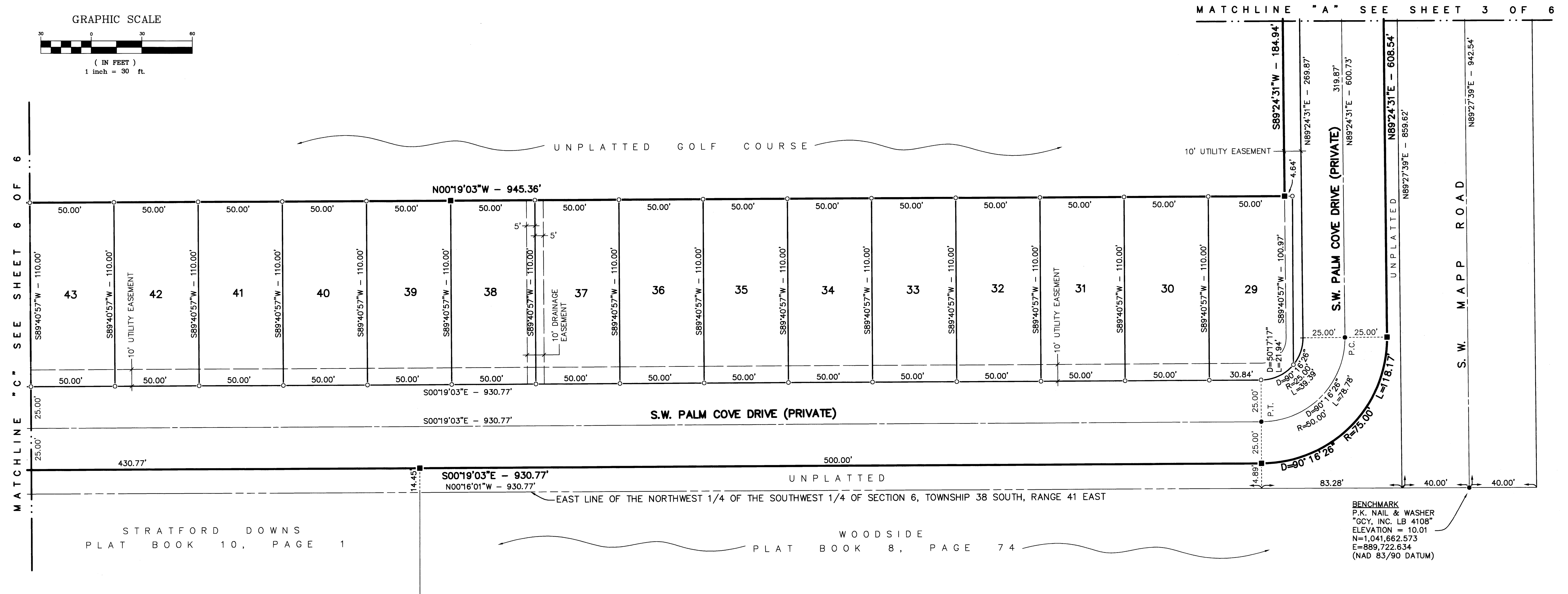
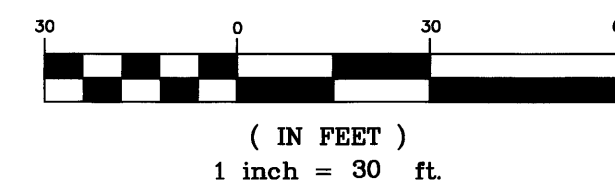
October 2002



LOCATION MAP



GRAPHIC SCALE

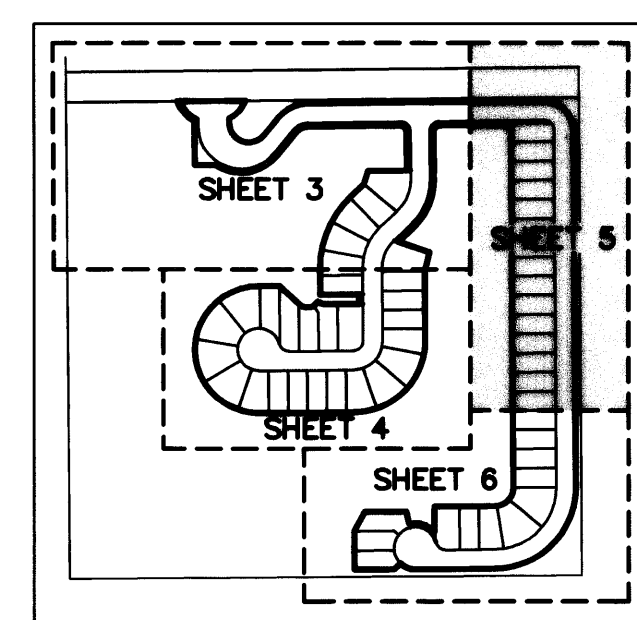


MATCHLINE "C" SEE SHEET 6 OF 6

MATCHLINE "A" SEE SHEET 3 OF 6

STRATFORD DOWNS  
PLAT BOOK 10, PAGE 1

WOODSIDE  
PLAT BOOK 8, PAGE 74



SHEET INDEX

LEGEND	
●	= SET PERMANENT CONTROL POINT (PCP) PARKER KALON NAIL & WASHER LABELED "G.C.Y. LB 4108"
○	= SET 3/4" IRON PIPE WITH YELLOW CAP LABELED "G.C.Y. INC. LB 4108"
■	= SET PERMANENT REFERENCE MONUMENT (PRM) 4"x4" CONCRETE MONUMENT WITH DISK LABELED "G.C.Y. INC. P.R.M. LB 4108, PSM 4864"
D	= DELTA (CENTRAL ANGLE)
L	= ARC LENGTH
R	= RADIUS
CB	= CHORD BEARING
D.E.	= DRAINAGE EASEMENT (PRIVATE)
LB	= LICENSED BUSINESS
P.C.	= POINT OF CURVATURE
P.I.	= POINT OF INTERSECTION
P.R.C.	= POINT OF REVERSE CURVATURE
PSM	= PROFESSIONAL SURVEYOR AND MAPPER
P.T.	= POINT OF TANGENCY
P.U.D.	= PLANNED UNIT DEVELOPMENT
(R)	= RADIAL LINE
NGVD	= NATIONAL GEODETIC VERTICAL DATUM

### SURVEYOR'S NOTES

- THIS PLAT, AS RECORDED IN ITS ORIGINAL FORM IN THE PUBLIC RECORDS, IS THE OFFICIAL DEPICTION OF THE SUBDIVIDED LANDS DESCRIBED HEREON AND WILL IN NO CIRCUMSTANCES BE SUPPLANTED IN AUTHORITY BY ANY OTHER FORM OF THIS PLAT, WHETHER GRAPHIC OR DIGITAL.
- THERE MAY BE ADDITIONAL RESTRICTIONS THAT ARE NOT RECORDED ON THIS PLAT THAT MAY BE FOUND IN THE PUBLIC RECORDS OF THIS COUNTY.
- THERE SHALL BE NO BUILDING OR ANY OTHER KIND OF CONSTRUCTION, OR PLACEMENT OF TREES OR SHRUBS ON DRAINAGE EASEMENTS.
- BEARINGS SHOWN HEREON ARE REFERENCED TO THE WEST LINE OF THE NORTHWEST 1/4 OF THE SOUTHWEST 1/4 OF SECTION 6, TOWNSHIP 38 SOUTH, RANGE 41 EAST, MARTIN COUNTY, FLORIDA. SAID LINE BEARS S02°24'16"E.
- ALL ELEVATIONS SHOWN HEREON ARE IN FEET AND REFERENCED TO THE NATIONAL GEODETIC VERTICAL DATUM (NGVD) 1929 AND BASED ON MARTIN COUNTY BENCHMARK "MAPP & CUT-1" HAVING AN ELEVATION OF 7.335 FEET.

Job Number 01-1131-56-01  
Licensed Business #4108

**G C Y**  
INCORPORATED  
PROFESSIONAL SURVEYORS AND MAPPERS  
CERTIFICATE OF AUTHORIZATION LB 4108  
CORPORATE OFFICE TALLAHASSEE OFFICE  
PO BOX 1469 • 1505 SW MARTIN HWY. 4909 N. MONROE STREET  
PALM CITY, FL 34991 TALLAHASSEE, FL 32303  
(800) 386-1066 (850) 536-8455